

Installing the Torchmate CAD Patch

The Accumove controller on your Torchmate machine uses g-code to cut job files. There are many ways to create g-code; we recommend using Torchmate CAD to generate g-code for your designs. In Torchmate CAD a *post-processor* is used to generate the machine output (a.k.a. g-code) for a drawing.

In this tutorial you will learn how to add the Accumove *post-processor* to Torchmate CAD. The Accumove post-processor needs to be installed on versions of Torchmate CAD 8 and older. Newer versions of Torchmate CAD have the post-processor built in.

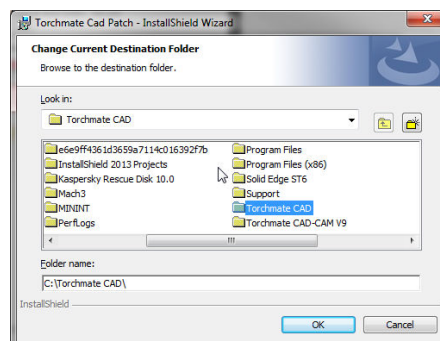
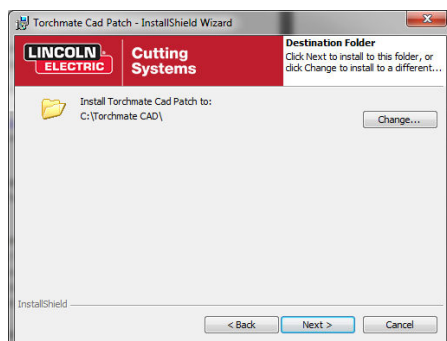
Before You Start:

Torchmate CAD must be installed before installing the Torchmate CAD Patch. Also, make sure that the CAD software is **not** running while performing the first step ‘Installing the CAD Patch.’

You will need the ‘Torchmate CAD Patch Setup.exe’ file to install the post-processor. This file can be found on the USB memory drive that you received with your Torchmate machine, or it can be downloaded from our website at <http://www.torchmate.com/products/Accumove>. Copy this file to your desktop, or some other convenient, accessible place on your computer.

Install the Torchmate CAD Patch.

- 1.) If Torchmate CAD is running, make sure to exit the program. Double-click the ‘Torchmate CAD Patch Setup.exe’ file that you saved to your desktop. The installer will open and ask if you’d like to continue. Click the ‘next’ button to proceed.
- 2.) Important: The installer needs to know where Torchmate CAD is installed. Typically CAD is installed to the path ‘C:\Torchmate CAD\’ but you may have a different installation path. The first step of the installer will prompt for the path to Torchmate CAD. Press the ‘change’ button and then navigate to the directory where Torchmate CAD is installed. After you select the correct folder, press ‘OK’ and then press ‘Next’ to continue the installation.



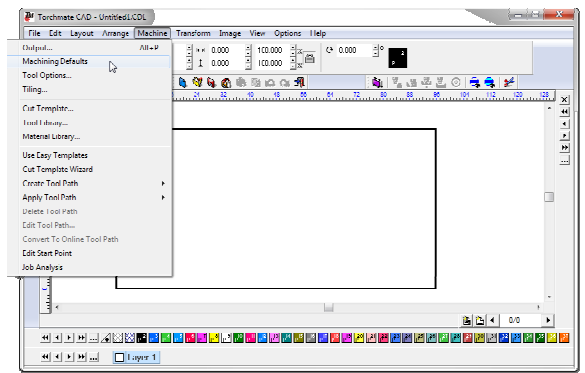
TORCHMATE – A LINCOLN ELECTRIC COMPANY

- 3.) Click 'Install' to install the patch. Once the installation completes, click 'Finish' to close the installer.

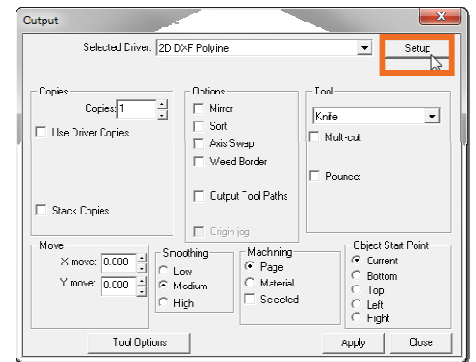
Add the Accumove Post Processor to Torchmate CAD.

- 1.) After the Torchmate CAD Patch has been installed, Torchmate CAD still needs to be configured to use the Accumove post-processor. Start by inserting your Torchmate CAD security dongle and open the Torchmate CAD software.

- 2.) When Torchmate CAD opens, click on 'Machine' in the file menu, then click on 'Machining Defaults.

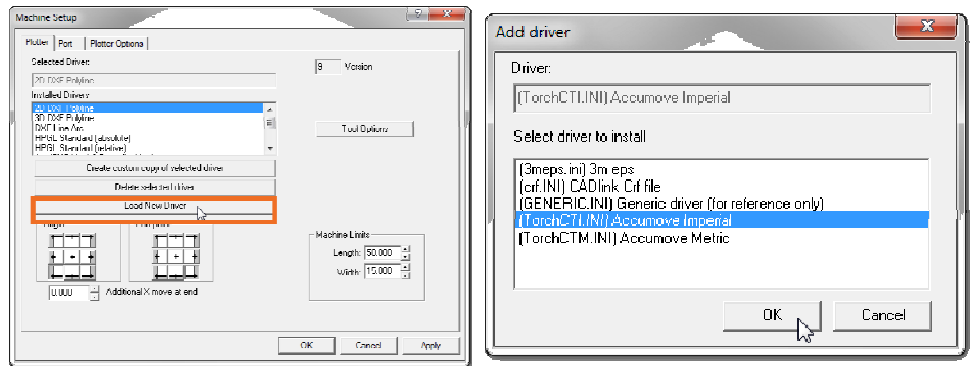


- 3.) The new window that opens will be called 'Output,' click on the 'Setup' button to add the new post-processor.

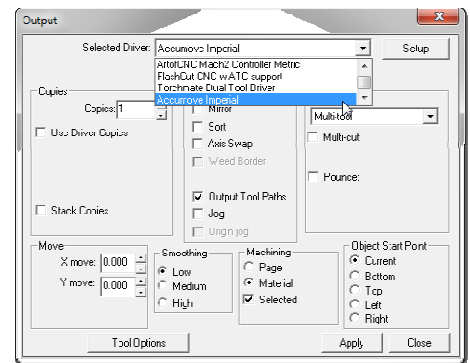


TORCHMATE – A LINCOLN ELECTRIC COMPANY

- 4.) Click the 'Load New Driver' button. Select 'Accumove Imperial' from the list and press 'OK.'



- 5.) Press 'OK' again to close the Machine Setup window. You should be back to the 'Output' window. If 'Accumove Imperial' isn't shown in the 'Selected Driver' option, use the drop-down to select it. Then press 'Apply' to complete the post-processor installation!



That's It!

You've completed installing the Torchmate CAD Patch, and you've also configured Torchmate CAD to use the Accumove post-processor when outputting machine code. From now on, Accumove compatible g-code will be generated when machine output is generated from Torchmate CAD.

If you'd like a more complete look at installing the Torchmate CAD patch, watch the video 'Installing the Torchmate CAD Patch,' you can find the video included on the USB memory stick included with your Torchmate machine, and on our website at <http://www.torchmate.com/products/Accumove>.

Read the tutorial 'Generating Tool Paths for Accumove with Torchmate CAD' to learn how to create g-code the Accumove controller can run for your Torchmate CAD designs.